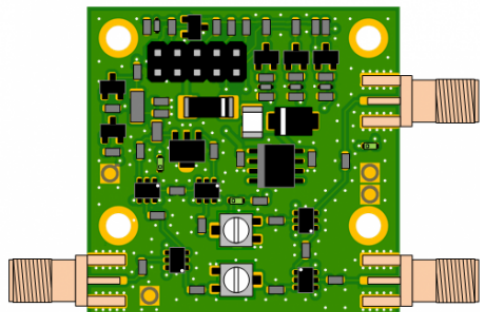


### MKU SW IF



#### Description

Use the PCB MKU SW IF to add a low power interface to your transverter module. The PCB was designed to work for example with the MKU 13G4 or MKU 23G4. Together with the LOW POWER IF mode of the transverter modules it can be used with transceivers with low drive level of a few mW or less.

#### Features

- useable with transceivers with one common transverter connector
- useable with transceivers with two separate transverter connectors
- TX IF amplifier for drive levels below 1 mW
- adjustable RX gain
- adjustable TX gain

#### Technical specifications:

RF - range	10 ... 500 MHz
Insertion loss	typ. 2 dB
PTT - Connector	Pinheader
Supply voltage	+13.8 V DC (+12 ... 14 V DC)
Connector supply voltage	Pinheader
Current consumption	10 mA (RX) / 100 mA (TX)
Dimensions (mm)	40 x 40 (with connectors)
IF connectors / impedance	SMA-female, 50 Ohms