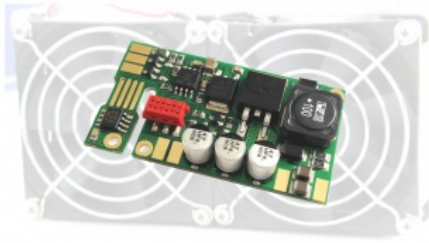


KU LS2 PWM, Fan controller



Description

The Universal PWM Fan Controller KU LS2 PWM is designed for professional and semi-professional applications. It controls the power / speed of the fans in accordance to the measured temperature. Multiple fans of the same type can be used in parallel. The digital temperature sensor works with a precision of +/- 1 °C and can be operated remotely. The fans are controlled by a pulse width modulation (PWM) with a switching frequency of typ. 18 kHz. Most off-the-shelf fans (incl. those with integrated electronic circuitry) in the supply voltage range of 12 ... 28 V DC can be used. Please notice the specifications of the fan manufacturer!

Features

- Easy integration and wiring due to the compact design
- High efficiency (no linear voltage regulator - not additional heat)
- Energy saving with power management
- Direct temperature monitoring and exact switching points
- Two alarm output in case of temperature excess (55°C/65°C)
- Reduction of noise disturbance

Technical specifications:

PWM Frequency	typ. 18 kHz
Power Rating	max. 3.0 A
Supply voltage	+12 ... 28 V DC
Current consumption (standby)	typ. 20 mA
Alarm output	max. 30 mA
Connectors	Solder pads
Dimensions	55 x 30 x 10
Weight	typ. 15 g